



Vol 19 No 1  
September 2007

**Features:**  
*HOUK Quick change wire wheels*  
*Part 8 Model 'R' Restoration proceeds*  
*Model R Restoration Report*  
*1934 Model Restoration*  
*Cylinder Heads*  
*South African Model 'N' Model R Maintenance*  
*Chandler Corner*



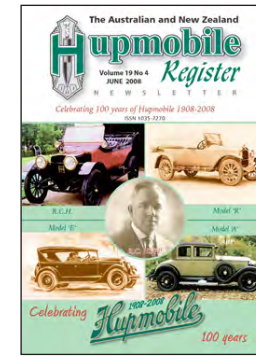
Vol 19 No 2  
December 2007

**Features:**  
*Clearance Standards*  
*Century Six Restoration Part 1*  
*Model 321-K Restoration Reports*  
*Tales of a veteran Hup. Virgin Pt. 1*  
*Model R Maintenance*  
*Chandler Corner*



Vol 19 No 3  
March 2008

**Features:**  
*Body Woodwork Pt. 1*  
*Century Six Restoration Part 2*  
*Australia Day Picnic*  
*Hupmobile - the beginning*  
*1929 Century Eight*  
*Tales of a veteran Hup. Virgin Pt. 2*  
*Model R Maintenance*  
*Chandler Corner*



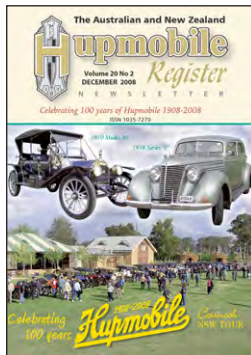
Vol 19 No 4  
June 2008

**Features:**  
*Body Woodwork Pt. 2*  
*Series 'J' in Czechoslovakia*  
*1925 Model R*  
*Tales of a veteran Hup. Virgin, concluded*  
*Model R Maintenance*  
*Chandler Corner 1926 factory guide*



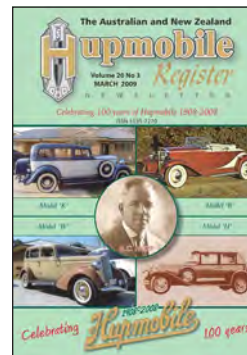
Vol 20 No 1  
September 2008

**Features:**  
*Body Woodwork Pt. 3*  
*Model 'S' Cabriolet*  
*The Resurrection – Series K. Part 1.*  
*1922 Model 'R' Reliability Run*  
*Model R Maintenance*  
*Chandler Corner*  
*1926 factory guide continued.*



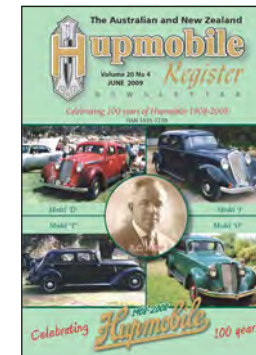
Vol 20 No 2  
December 2008

**Features:**  
*Creating a Rubber Hupmobile floor mat*  
*Bay to Birdwood Run*  
*The Resurrection – Series K. Part 2.*  
*14th National Rally at Cessnock Report*  
*Model R Maintenance*  
*Chandler Corner*  
*1926 factory guide continued.*



Vol 20 No 3  
March 2009

**Features:**  
*Stromberg Type M Carburettor 1*  
*RCH pictures*  
*Model R Restoration*  
*Skylark feature*  
*Model 32 project*  
*Picnic reports*  
*Model R Maintenance*  
*Chandler Corner*  
*1926 factory guide continued.*



Vol 20 No 4  
June 2009

**Features:**  
*Stromberg Type M Carburettor 2*  
*Members' cars*  
*The Hupmobilst*  
*Model R Restoration*  
*1922 Model 'R' Reliability Run*  
*Model R Maintenance*  
*Chandler Corner*  
*1926 factory guide continued.*



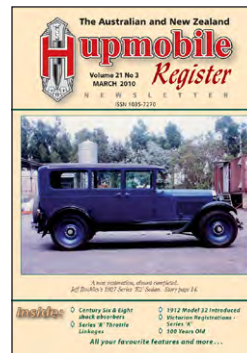
Vol 21 No 1  
September 2009

**Features:**  
*Hupp 32 engine removal part 1*  
*Model R*  
*1926 Hupmobile 6*  
*1930 Model S*  
*Model R Restoration*  
*Resurrection Model E*  
*Model R Maintenance*  
*Chandler Corner*  
*Factory guide concluded.*



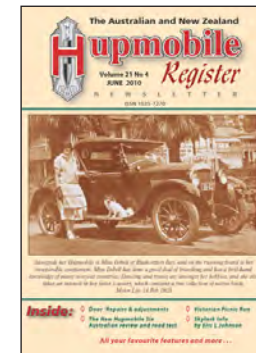
Vol 21 No 2  
December 2009

**Features:**  
*Hupp 32 engine removal part 2*  
*Model E mechanical changes*  
*Model R Restoration*  
*Resurrection Model E*  
*RCH photos*  
*Chandler Corner 1926*  
*Chandler Royal*



Vol 21 No 3  
March 2010

**Features:**  
*1927 Series E*  
*Model R Restoration*  
*Model 20*  
*Skylark*  
*Model 32 and Model 20 changes and improvements*  
*Chandler Corner*



Vol 21 No 4  
June 2010

**Features:**  
*Door repairs and adjustments*  
*Model R Restoration*  
*The Hupmobilst*  
*New (1928) Hupmobile Six*  
*Skylark*  
*Phizackerley letters*  
*Chandler Corner*



**Features:**  
 Series A Brake adjustments  
 Model R Restoration  
 Belgian Series "L"  
 Aerodynamic 8 cyl.  
 Diary of a Series K Cabriolet  
 Chandler Corner

Vol 22 No 1  
 September 2010



**Features:**  
 Parts Books  
 Model R Restoration  
 Gas Producers  
 2010 National Tour  
 1913 Hupmobile  
 1934 - K421 Coupe  
 Chandler Corner

Vol 22 No 2  
 December 2010



**Features:**  
 Parts Books  
 Model R Restoration  
 1928 A6 Century Six  
 1939 Senior E922  
 WA Reg Records  
 Tasmanian gathering  
 Chandler Corner

Vol 22 No 3  
 March 2011



**Features:**  
 Parts Books - bearings  
 Model R Maintenance  
 Hupmobile "32"  
 Delivery Car  
 Victorian run  
 The Hupp 8 Saloon  
 1936 G and N models  
 WA Reg Records  
 Chandler Corner

Vol 22 No 4  
 June 2011



**Features:**  
 Radiator maintenance  
 Model R Restoration  
 Hupmobile Genuine Spare Parts  
 1929 Series 'A' Roadster  
 Model 20 body styles  
 WA Reg Records  
 Chandler Corner

Vol 23 No 1  
 September 2011



**Features:**  
 Carburettor  
 Model R Restoration  
 1930 Model C  
 Hupmobile Genuine Spare Parts  
 100 Cars a Day Production  
 Model 20 body styles  
 WA Reg Records  
 Chandler Corner

Vol 23 No 2  
 December 2011



**Features:**  
 Technical Talk — 1925-30 Hupp, pt 1  
 Through Victoria on a Hupp  
 Model R Maintenance  
 Model R Restoration — Final  
 After Sales Service  
 WA Reg Records  
 Chandler Corner

Vol 23 No 3  
 March 2012



**Features:**  
 Technical Talk — 1925-30 Hupp, pt 2  
 Through Victoria on a Hupp  
 Hupmobile Spare Parts Service  
 A real Hupmobile Man  
 1933 Series K Cabriolet  
 WA Reg Records  
 Chandler Corner

Vol 23 No 4  
 June 2012



**Features:**  
 1925-30 Tune-up  
 Through Victoria on a Hupp part 2  
 Coaches and Cars in New Zealand  
 Kiwi Hupps on Tour  
 'S' Series Pictorial  
 WA Reg Records  
 1914 & 1915 Hupps  
 Chandler Corner

Vol 24 No 1  
 September 2012



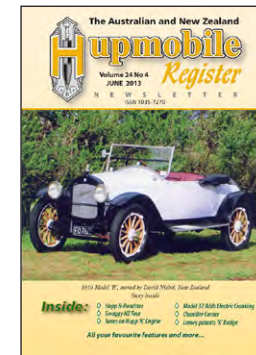
**Features:**  
 1925-30 Tune-up  
 To Narrabri by Hupp  
 2012 National Rally  
 Issue with Reports, Entrants and Chat  
 1926 'A' Tourer goes to Bundaberg  
 WA Reg Records  
 1914 & 1915 Hupps  
 Chandler Corner

Vol 24 No 2  
 December 2012



**Features:**  
 Repairing a Wobbly Wheel  
 Stewart Warner Accessories  
 South African Series 'A'  
 1913 Restoration and Advertisement  
 WA Reg Records  
 1914 & 1915 Hupps  
 Chandler Corner

Vol 24 No 3  
 March 2013



**Features:**  
 Notes on 1933-34 'K' Engine  
 Interchangeable Hupp Parts  
 NZ Model 'R' Roadster and Swaggie Tour Report  
 WA Reg Records  
 1914 & 1915 Hupps  
 Chandler Corner

Vol 24 No 4  
 June 2013



**Features:**  
*Notes on 1933-34 'K' Engine Series R-12 improvements*  
*1938 Hupmobile Six*  
*Hupmobile Six – The Model A*  
*WA Reg Records*  
*1914 & 1915 Hupps*  
*Chandler Corner*

Vol 25 No 1  
 September 2013



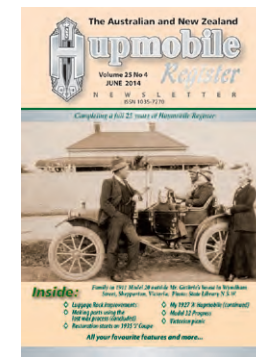
**Features:**  
*Lost Wax method of making parts–pt. 1*  
*1910 Hupmobile*  
*1938 Series E*  
*1973 NZ Hupp Run*  
*1933 Series J – Where are you now?*  
*WA Reg Records*  
*1914 & 1915 Hupps*  
*Chandler Corner*

Vol 25 No 2  
 December 2013



**Features:**  
*Lost Wax method of making parts–pt. 2*  
*1927 "A" Hupmobile*  
*1929 Series M Hupmobile*  
*improvements for 1911*  
*WA Reg Records*  
*The Hupmobilst*  
*Chandler Corner*

Vol 25 No 3  
 March 2014



**Features:**  
*Lost Wax method of making parts–pt. 3*  
*1927 "A" Hupmobile part 2*  
*1920 Model R*  
*1913 Model 32*  
*1935 Series 531-J*  
*WA Reg Records*  
*Series K Luggage rack*  
*Chandler Corner*

Vol 25 No 4  
 June 2014